



**ACCESSORIES
FOR PRESSURE
GAUGE**

**ACCESSORIES
FOR PRESSURE GAUGE**

MODEL

CAT. NO

.....

Union	A010	AD01-01
Gauge Union	A020	AD01-02
Syphon Tube	A030	AD01-03
Pulsation Dampne	A040	AD01-04
Snubber	A050	AD01-05
Condensing Pot	A060	AD01-06
Gauge Protector	A070	AD01-07
Instrument Manifold valve	A080	AD01-08

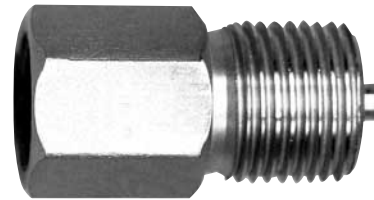
UNION
MODEL : A010



AD01 - 01

SERVICE INTENDED

Used for adapting size of the pressure tap is different the size of the pressure instrument thread.



ORDERING INFORMATION

BASE MODEL - 1st thru 4th characters
A010 : UNION

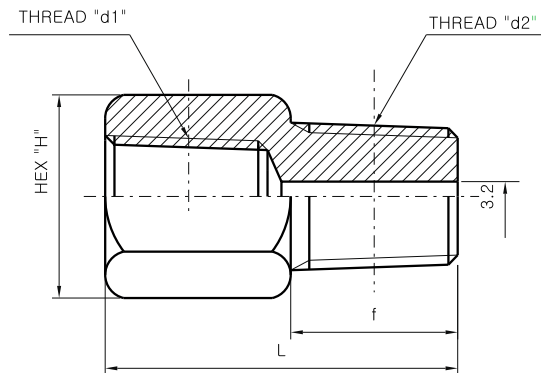
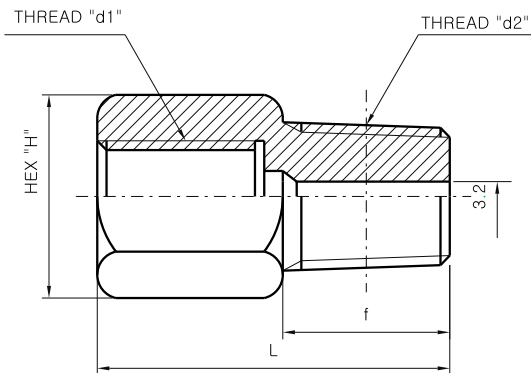
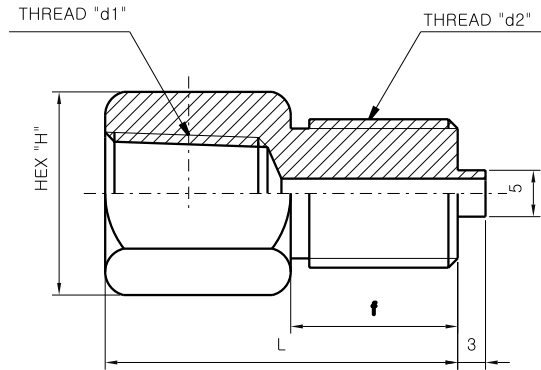
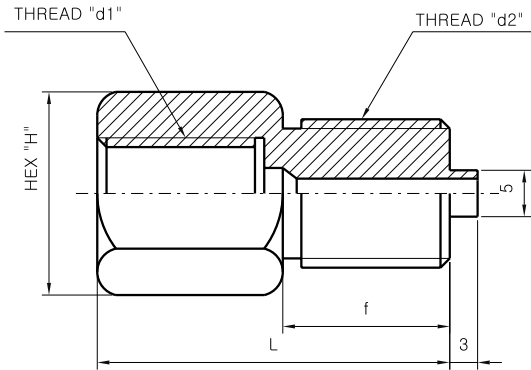
5th Character		6th Character		7th Character		8th Character	
Code	Unused Character	Code	Material	Code	Gauge Connection Size	Code	Gauge Connection Type
A		A	Brass	0	1/4"	A	PF(F)
		C	304SS	1	3/8"	B	PT(F)
		D	316SS	2	1/2"	C	NPT(F)
				3	1/8"		
		Z	Other	9	Other	Z	Other

9th Character		10th Character		11th thru 15th Character	
Code	Process Connection Size	Code	Process Connection Size	Code	Unused Character
A	1/8"	G	PF(M)	A0000	
B	1/4"	H	PT(M)		
C	3/8"	J	NPT(M)		
D	1/2"				
E	3/4"				
Z	Other	Z	Other		

A010AC1BDHA0000 SAMPLE ORDERING NUMBER

A010 : UNION

AD01 - 01



* L : MAKER STANDARD

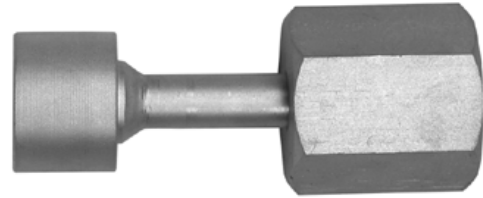
d1				d2			
	PF		1/4		PF		1/4
	PT		3/8		PT		3/8
	NPT		1/2		NPT		1/2
			3/4				3/4
SELECTION :							

GAUGE UNION
MODEL : A020



SERVICE INTENDED

It is used for positive sealing while the pressure gauge may be directed into any direction



ORDERING INFORMATION

BASE MODEL - 1st thru 4th characters
A020 : GAUGE UNION

5th Character		6th Character		7th Character		8th Character		9th Character	
Code	Union Type	Code	Material	Code	Gauge Connection Size	Code	Gauge Connection Type	Code	Process Connection Size
N	Pipe Welding	B	S25C	1	3/8"	A	PF(F)	A	1/8"(10.5mm)
P	PF(M)	C	304SS	2	1/2"			C	3/8"
Q	PT(M)	D	316SS	0	1/4"			D	1/2"
R	Socket Welding	F	316LSS					E	3/4"
S	Boss							Q	Flange
T	Flange								
						Z	Other	Z	Other

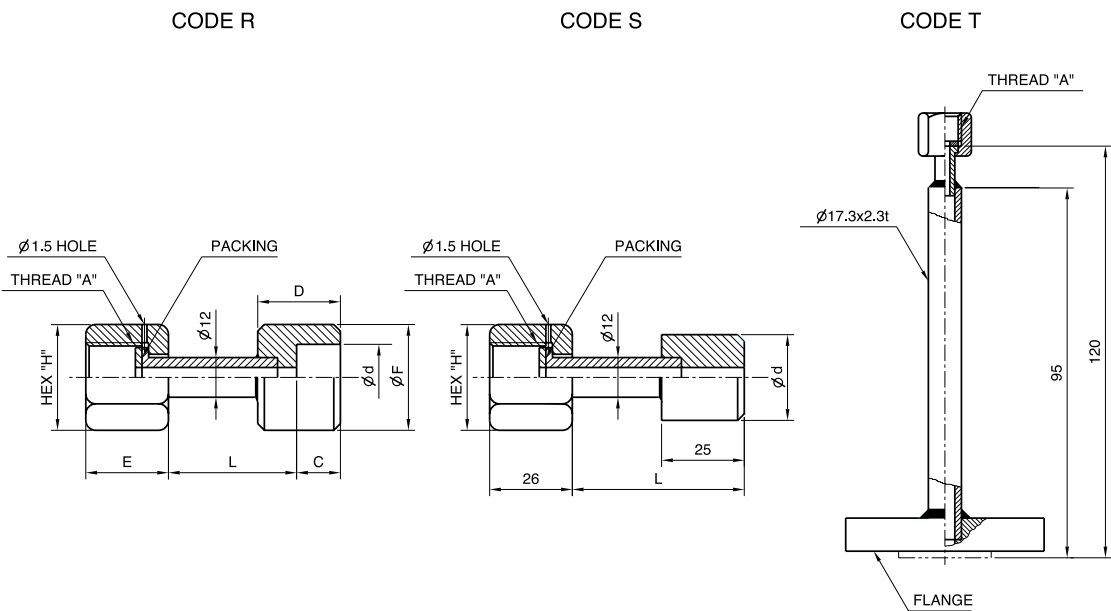
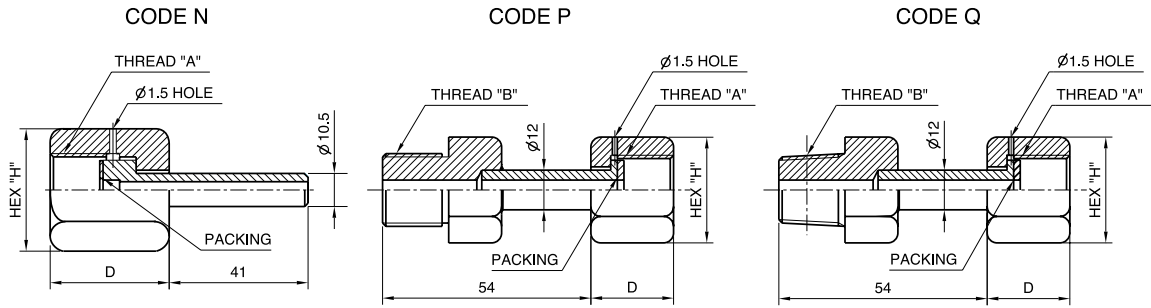
10th Character		11th Character		12th Character		13th thru 15th Character	
Code	Process Connection Type	Code	Flange Size	Code	Flange Rating	Code	Unused Character
G	PF(M)	A	N/A	A	N/A	000	
H	PT(M)	D	1/2"(15A)	B	ANSI 150# RF		
J	NPT(M)	E	3/4"(20A)	C	ANSI 150# FF		
N	S.W	F	1" (25A)	D	ANSI 150# RFSF		
P	Pipe Welding	G	1 1/4"(32A)	E	ANSI 300# RF		
Q	Flange	H	1 1/2"(40A)	F	ANSI 300# FF		
		J	2" (50A)	G	ANSI 300# FFSF		
				H	ANSI 600# RF		
				J	ANSI 600# FF		
				K	ANSI 600# RFSF		
				L	JIS 10K RF		
				M	JIS 10K FF		
				N	JIS 10K RFSF		
				P	JIS 20K RF		
				Q	JIS 20K FF		
				R	JIS 20K RFSF		
				S	JIS 30K RF		
				T	JIS 30K FF		
				U	JIS 30K RFSF		
Z	Other	Z	Other	Z	Other		

Note : Only "P" code 10th character is available when you choose "A" code on 9th character.

A020PC1ACGAA000 SAMPLE ORDERING NUMBER

A020 : GAUGE UNION

AD01 - 02



Dimensions mm

CODE	A	B	D	H	CODE	A	d	C	D	E	F	L	H
N	PF3/8		34	27x31.2	R	PF3/8	3/8B	10	22	26	26	42	27X31.2
	PF1/2		36	32x37		PF3/8	1/2B				32		
P	PF3/8	PF3/8	26	27x31.2		PF3/8	3/4B	13	25	28	40	42	32X37
		PF1/2				PF3/4	10	22	PF1/2		3/8B		
	PF1/2	PF3/8	28	32x37		PF1/2			1/2B		32		
		PF1/2				PF3/4	PF1/2	3/4B	13		25		
Q	PF3/8	PT3/8	26	27x31.2	S	PF1/2	3/8B					45	32X37
		PT1/2					1/2B						
		PT3/4					3/4B						
	PF1/2	PT3/8	28	32x37	CODE	A	FLANGE RATING						
		PT1/2			T	PF3/8	JIS	10,16,20,30,40K		15,20,25,32,40,50A		FF	
PT3/4		PF3/8				ANSI (JPI)		150,300,600LB		1/2,3/4,1,11/4 11/2 2B		FF	
			PF1/2						RF				

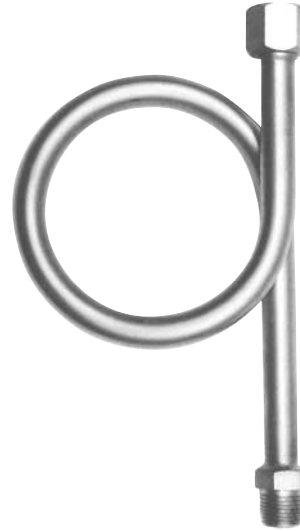
**SYPHON TUBE
MODEL : A030**



AD01 - 03

SERVICE INTENDED

It is used for protecting the pressure gauge from the effect of hot pressure media like steam and also reducing the effect of rapid pressure surges.



ORDERING INFORMATION

BASE MODEL - 1st thru 4th characters
A030 : SYPHON TUBE

5th Character		6th Character		7th Character		8th Character		9th Character	
Code	Union Type	Code	Material	Code	Gauge Connection Size	Code	Gauge Connection Type	Code	Process Connection Size
B	Winding	B	S25C	1	3/8"	A	PF(F)	C	3/8"
C	Pig Tail	C	304SS	2	1/2"	B	PT(F)	D	1/2"
		D	316SS	0	1/4"	C	NPT(F)	Q	Flange
		E	316LSS					B	1/4"
		Z	Other	9	Other	Z	Other	Z	Other

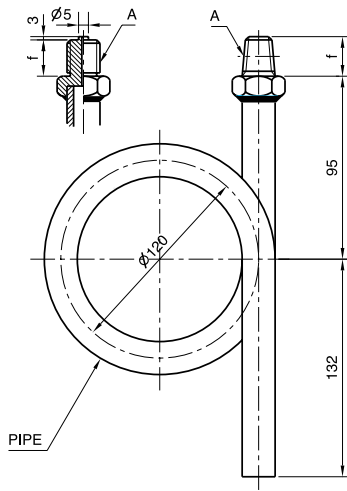
10th Character		11th Character		12th Character		13th thru 15th Characters	
Code	Process Connection Type	Code	Flange Size	Code	Flange Rating	Code	Unused Character
G	PF(M)	A	N/A	A	N/A	000	
H	PT(M)	D	1/2"(15A)	B	ANSI 150# RF		
J	NPT(M)	E	3/4"(20A)	C	ANSI 150# FF		
N	S, W	J	2" (50A)	D	ANSI 150# RFSF		
				E	ANSI 300# RF		
P	Pipe Welding	F	1" (25A)	F	ANSI 300# FF		
				G	ANSI 300# FFSF		
Q	Flange	G	1 1/4"(32A)	H	ANSI 600# RF		
			1 1/2"(40A)	J	ANSI 600# FF		
		H	2" (50A)	K	ANSI 600# RFSF		
				L	JIS 10K RF		
		M	JIS 10K FF				
		N	JIS 10K RFSF				
		P	JIS 20K RF				
		Q	JIS 20K FF				
		R	JIS 20K RFSF				
		S	JIS 30K RF				
T	JIS 30K FF						
U	JIS 30K RFSF						
Z	Other	Z	Other	Z	Other		

A030BC1CDPAA000 SAMPLE ORDERING NUMBER

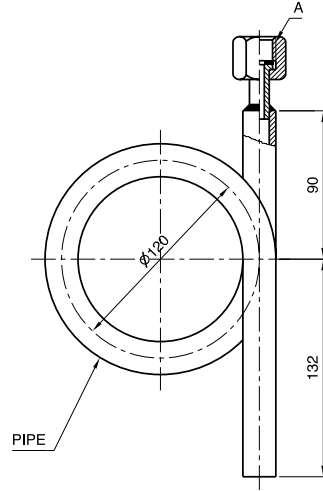
A030 : SYPHON TUBE (1/2)

AD01 - 03

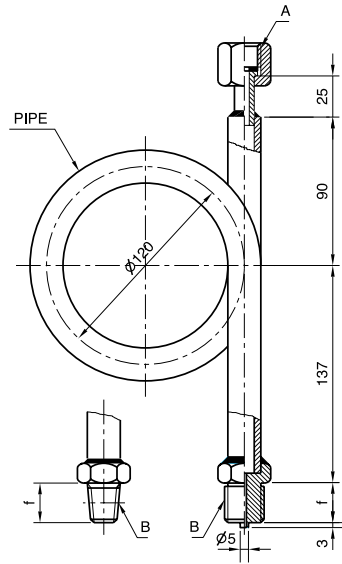
CODE B



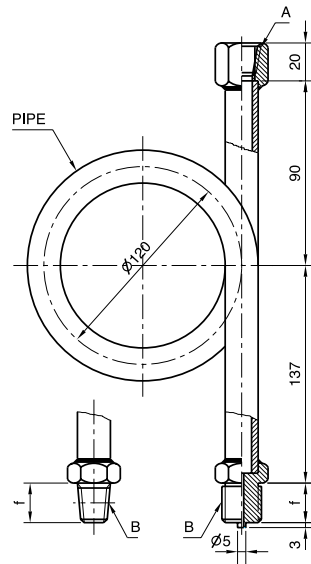
CODE B*



CODE B**



CODE B***

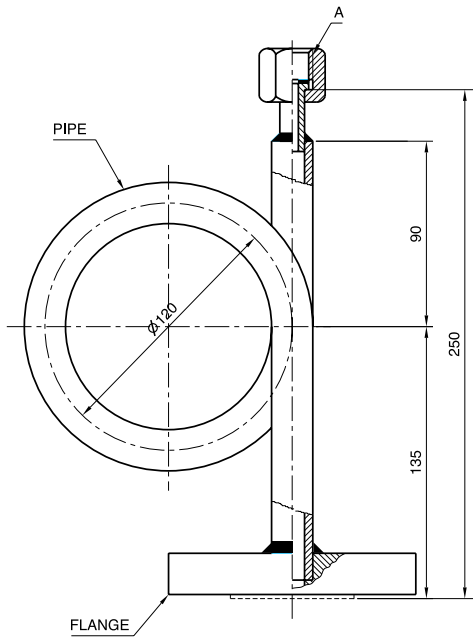


Dimensions mm

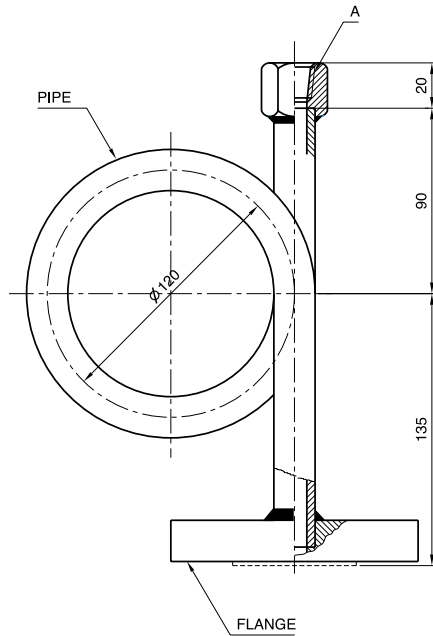
CODE	PIPE	A	B	f
B	Ø 17.3x2.3t	PF3/8	PF3/8	18
		PF1/2	PF1/2	20
B*	Ø 17.3x3.2t	PT3/8	PT3/8	16
B**	Ø 21.7x2.8t	PT1/2	PT1/2	18
B***	Ø 21.7x3.7t	NPT3/8	NPT3/8	16
		NPT1/2	NPT1/2	18

A030 : SYPHON TUBE (2/2)

CODE B



CODE B*



Dimensions mm

CODE	PIPE	A	FLANGE RATING			
B	Ø17.3x2.3t Ø17.3x3.2t	PF3/8	JIS	10,16,20, 30,40K	15,20,25, 32,40,50A	FF
			ANSI (JPI)	150,300LB	11/4,11/2,2B	RF
	Ø21.7x2.8t Ø21.7x3.7t	PF1/2	JIS	10,16,20, 30,40K	15,20,25, 32,40,50A	FF
			ANSI (JPI)	150,300LB	11/4,11/2,2B	RF
B*	Ø17.3x2.3t Ø17.3x3.2t	PT3/8	JIS	10,16,20, 30,40K	15,20,25, 32,40,50A	FF
			ANSI (JPI)	150,300LB	11/4,11/2,2B	RF
	Ø21.7x2.8t Ø21.7x3.7t	PT1/2	JIS	10,16,20, 30,40K	15,20,25, 32,40,50A	FF
			ANSI (JPI)	150,300LB	11/4,11/2,2B	RF

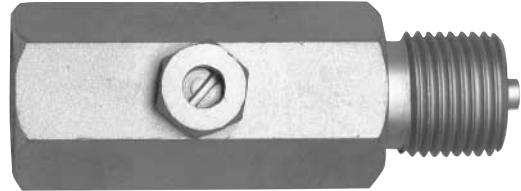
**PULSATION DAMPENER
MODEL : A040**



AD01 - 04

SERVICE INTENDED

It is used for reducing the pressure pulsation flowing from pump or air compressor in order to facilitate pressure gauge reading. if the liquids and gases only are clean enough and compatible with the material of the dampener. It is applicable to kind of liquids or gases.



ORDERING INFORMATION

BASE MODEL - 1st thru 4th characters

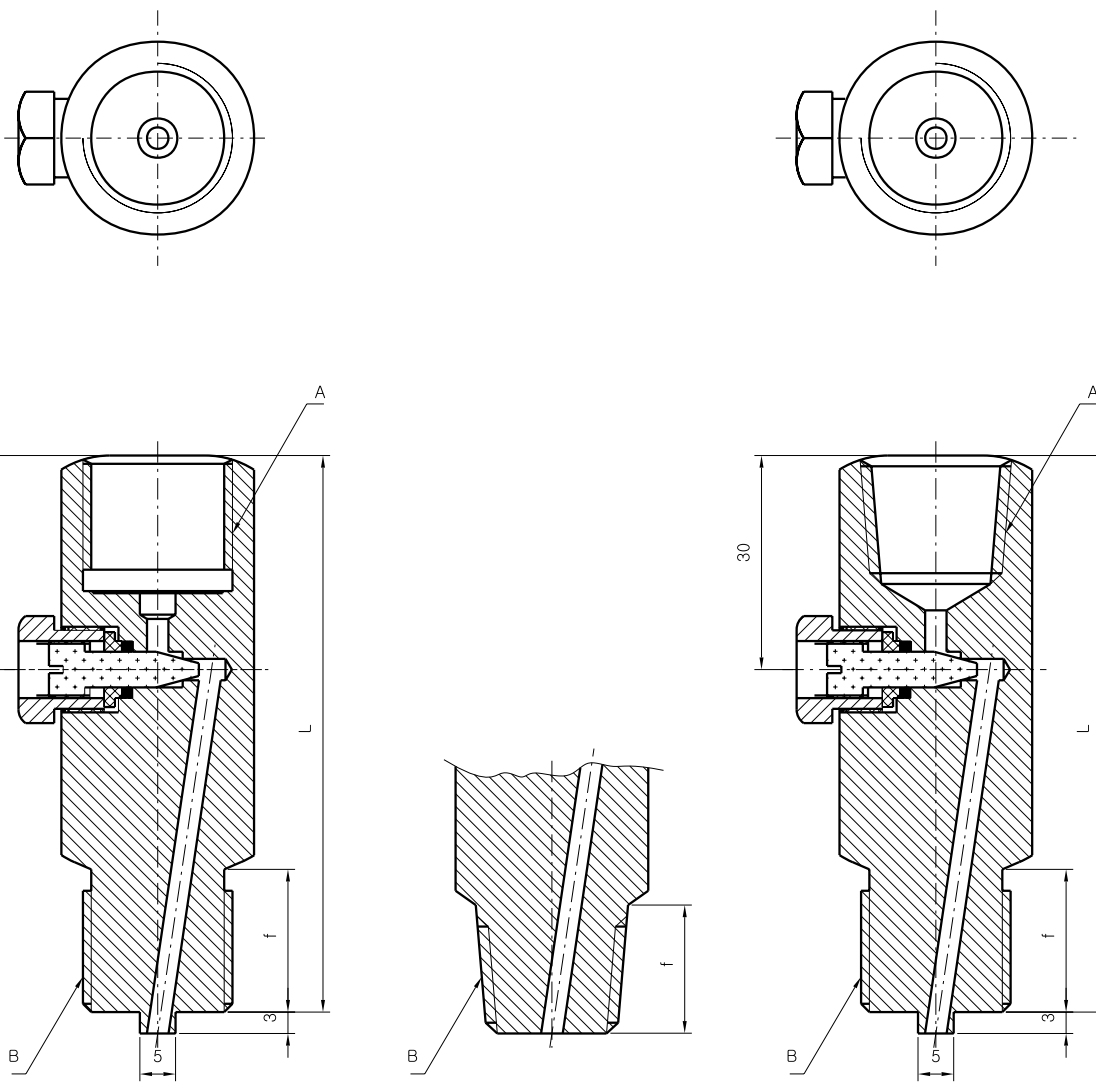
A040 : PULSATION DAMPENER

5th Character		6th Character		7th Character		8th Character	
Code	Unused Character	Code	Material	Code	Gauge Connection Size	Code	Gauge Connection Type
A		A	Brass	1	3/8"	A	PF(F)
		C	304SS	2	1/2"	B	PT(F)
		D	316SS			C	NPT(F)
		Z	Other	9	Other	Z	Other

9th Character		10th Character		11th thru 15th Character	
Code	Process Connection Size	Code	Process Connection Size	Code	Unused Character
C	3/8"	G	PF(M)	A0000	
D	1/2"	H	PT(M)		
		J	NPT(M)		
Z	Other	Z	Other		

A040AC1BDJA0000 SAMPLE ORDERING NUMBER

A040 : PULSATION DAMPENER



Dimensions(mm)

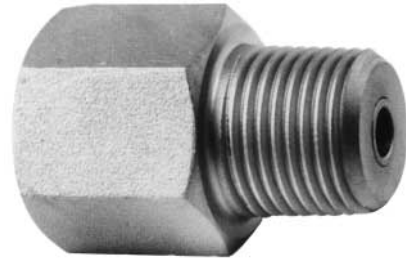
A	B	f	L
PF3/8	PF3/8	18	78
	PF1/2	20	78
PF1/2	NPT3/8	16	76
	NPT1/2	18	76
NPT3/8	PF3/8	18	78
	PF1/2	20	78
NPT1/2	NPT3/8	16	76
	NPT1/2	18	76

SNUBBER
MODEL : A050



SERVICE INTENDED

Used for suppressing the effect of pressure pulses and pressure spike. It features an adjustable needle valve to enable to restricting flow as operating conditions may demand.



ORDERING INFORMATION

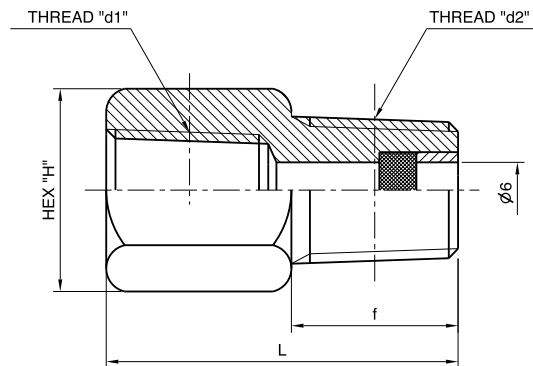
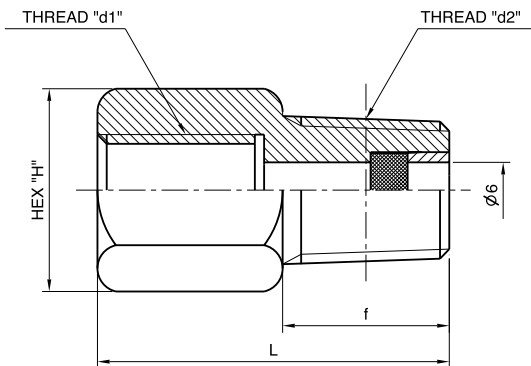
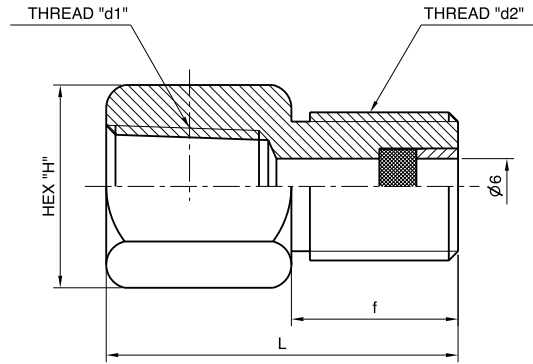
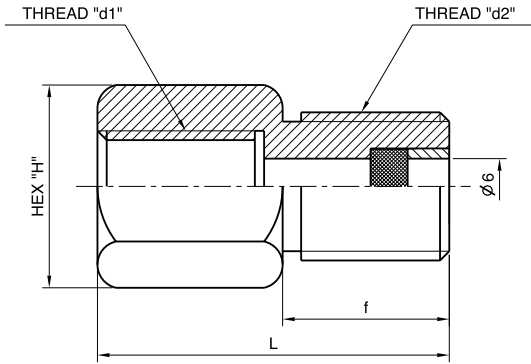
BASE MODEL - 1st thru 4th characters
 A050 : SNUBBER

5th Character		6th Character		7th Character		8th Character	
Code	Unused Character	Code	Material	Code	Gauge Connection Size	Code	Gauge Connection Type
A		D	316SS	2	1/2"	A B C	PF(F) PT(F) NPT(F)
		Z	Other	9	Other	Z	Other

9th Character		10th Character		11th thru 15th Character	
Code	Process Connection Size	Code	Process Connection Size	Code	Unused Character
C D	3/8" 1/2"	G H J	PF(M) PT(M) NPT(M)	A0000	
Z	Other	Z	Other		

A050AD2BDJA0000 SAMPLE ORDERING NUMBER

A050 : SNUBBER



* L : MAKER STANDARD

d1			d2			
	PF	1/2		PF		3/8
	PT			PT		1/2
	NPT			NPT		
SELECTION :						

CONDENSING POT
MODEL : A060



CONDENSING POT

It is used for protecting the pressure instruments from the effect of hot pressure media like steam. It is used for the same purpose as SYPHON TUBE and mainly, is provided for Pressure Transmitter or Differential Pressure Transmitter.



ORDERING INFORMATION

BASE MODEL - 1st thru 4th characters
 A060 : CONDENSATE

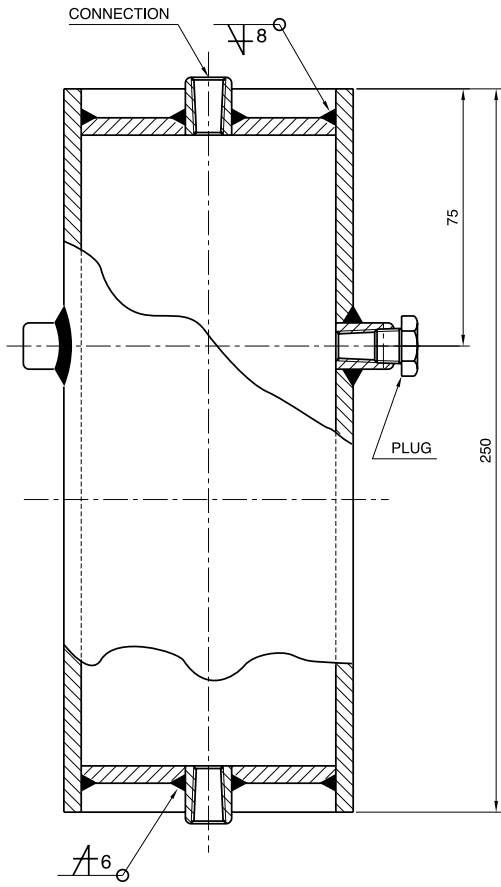
5th Character		6th Character		7th Character		8th Character	
Code	POT Type	Code	Material	Code	Gauge Connection Size	Code	Gauge Connection Type
A	Flat Type3" Sch40	B	S25C	2	1/2"	B	PF(F)
E	Flat Type3" Sch80	C	304SS			C	NPT(F)
F	Flat Type3" Sch160	D	316SS				
G	Globe Type3" Sch40						
H	Globe Type3" Sch80						
J	Globe Type3" Sch160						
		Z	Other	9	Other	Z	Other

9th Character		10th Character		11th thru 15th Character	
Code	Process Connection Size	Code	Process Connection Size	Code	Unused Character
D	1/2"	B	PT(F)	A0000	
		C	NPT(F)		
Z	Other	Z	Other		

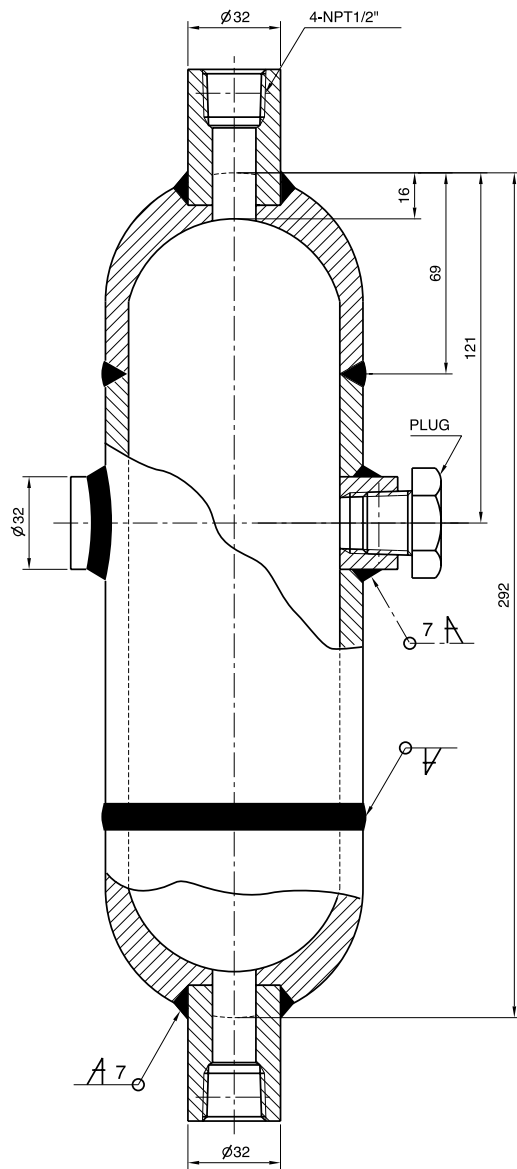
A060EC2CDCA0000 SAMPLE ORDERING NUMBER

A060 : CONDENSATE

FLAT TYPE



GLOBE TYPE



GAUGE PROTECTOR MODEL : A070

WISE®

SERVICE INTENDED

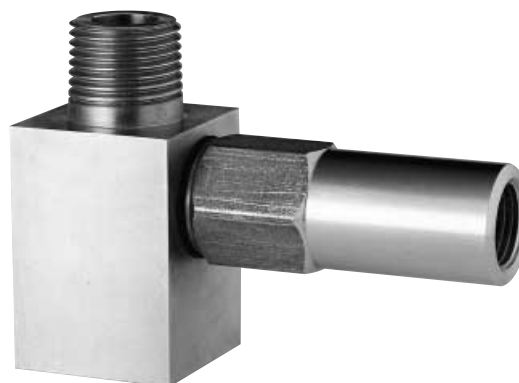
It is used for protecting the gauges from over range pressure.

The gauge protector close at a adjusted setpoint pressure.

ORDERING INFORMATION

BASE MODEL - 1st thru 4th characters

A070 : GAUGE PROTECTOR



5th Character		6th Character		7th Character		8th Character	
Code	Type	Code	Material	Code	Gauge Connection Size	Code	Gauge Connection Type
N	Medium Pressure	D	316SS	2	1/2"	C	NPT"(F)
		Z	Other	9	Other	Z	Other

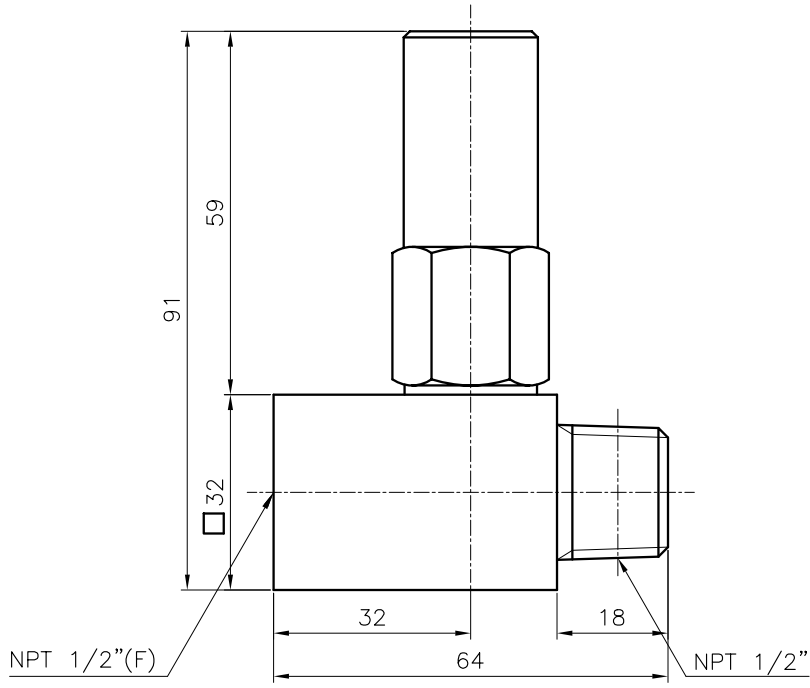
9th Character		10th Character		11th~15th Character	
Code	Precess Connection Size	Code	Precess Connection Size	Code	Unused Characters
D	1/2"	C	NPT"(F)	A000	
		J	NPT"(M)		
Z	Other	9	Other		

Standard Features

MODEL NO.	TYPE	SET PRESSURE	CONNECTION
A070ND2CDJA0000	Medium Press	15 ~ 600 psi	1/2NPT(F)X1/2NPT(M)

A070 : TYPE OF MOUNTING

CODE N



INSTRUMENT MANIFOLD VALVE

MODEL : A080

SERVICE INTENDED

It is used for switching flow between one common connection and the other two connections.
The instrument manifold valve is applied to the pressure gauge and pressure transmitter.

ORDERING INFORMATION

BASE MODEL - 1st thru 4th characters

A080 : INSTRUMENT MANIFOLD VALVE



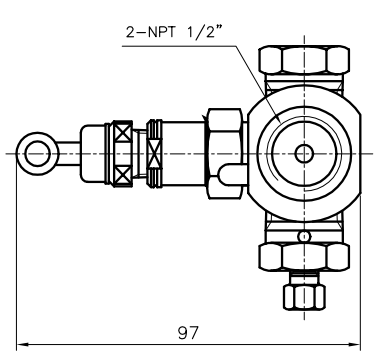
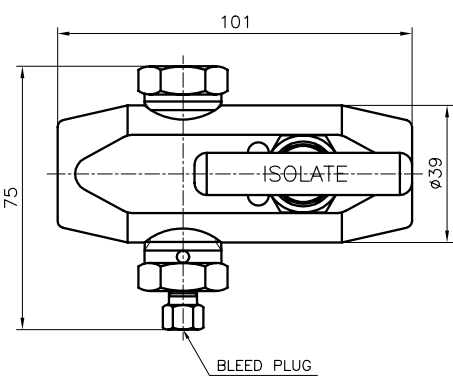
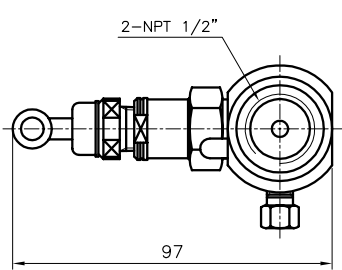
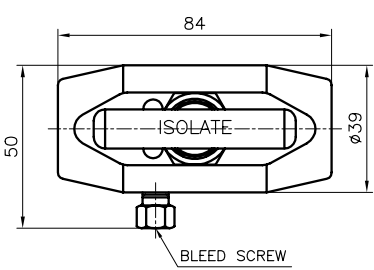
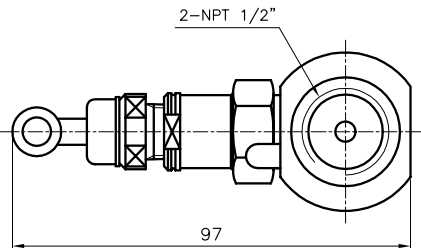
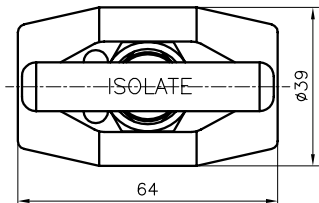
5th Character		6th Character		7th Character		8th Character	
Code	Type	Code	Gauge Connection Type	Code	Gauge Connection Size	Code	Process Connection Type
S	Isolation valve	W	NPT(F)	2	1/4"	W	NPT(F)
W	2 way manifold	M	NPT(M)	4	1/2"	M	NPT(M)
		Z	Other	9	Other	Z	Other

9th Character		10th Character		11th Character		12th Character	
Code	Process Connection Size	Code	Packing Material	Code	Bleed & Plug	Code	Bleed & Plug Size
2	1/4"	T	PTFE	A	No Bleed	1	1/4"NPT(F)
4	1/2"	G	Graphite	B	Bleed	2	1/2"NPT(F)
				C	Bleed & Plug	3	No Bleed
						4	M8 screw
Z	Other					Z	Other

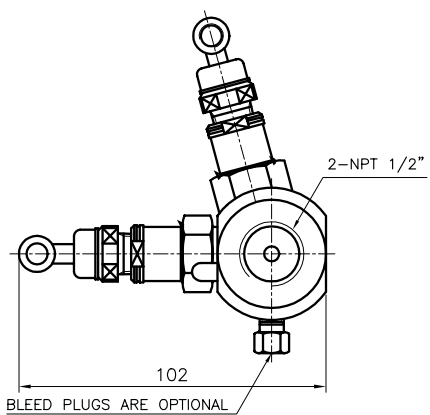
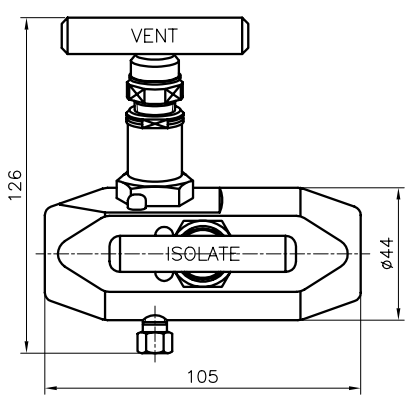
13th Character		14th Character		15th Character	
Code	Material	Code	Unused	Code	Unused
C	CS	X	All T Bar	O	
H	316SS				
L	316L SS				
J	MONEL				
Z	INCONEL 718				
N	NACE MR01-75				
T	Other				

A080 : TYPE OF MOUNTING

CODE S



CODE W



BLEED PLUGS ARE OPTIONAL

INSTRUMENT MANIFOLD VALVE MODEL : A080

WISE®

SERVICE INTENDED

It is used for switching flow between one common connection and the other two connections.
The instrument manifold valve is applied to the D/P gauge and D/P transmitter.

ORDERING INFORMATION

BASE MODEL - 1st thru 4th characters

A080 : INSTRUMENT MANIFOLD VALVE



5th Character		6th Character			7th Character	
Code	Manifold Type	Code	Mounting Type	Code	Material	
T	3 WAY	1	3 or 5 Way Remote mounting pipe to pipe	A	CS	
F	5 WAY	2	3 or 5 Way Remote mounting pipe to pipe w/ vent port	B	316SS	
		3	3 or 5 Way Direct mounting pipe to flange	C	316L SS	
		4	3 or 5 Way Direct mounting pipe to flange w/ vent port	D	MONEL	
		5	"3 Way Direct mounting pipe to flange, Tee Section"	E	INCONEL 718	
		6	3 or 5 Way Direct mounting flange to flange	N	NACE MR01-75	
		Z	Othe	Z	Other	

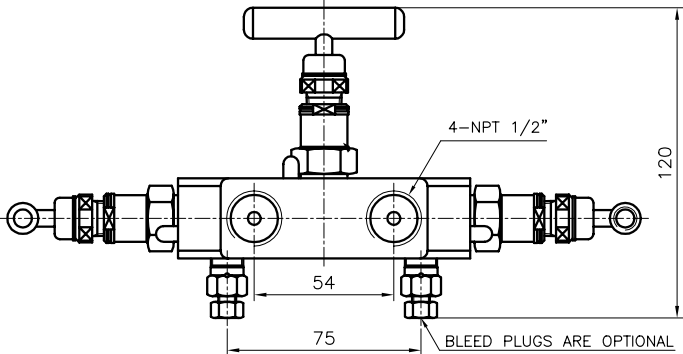
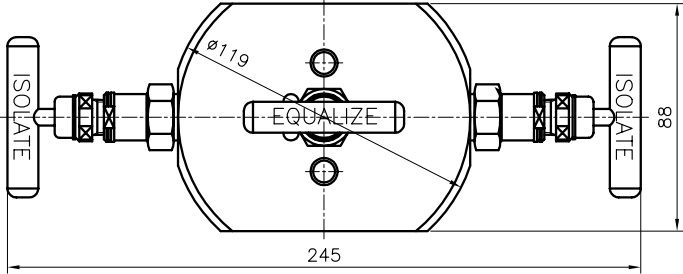
8th Character		9th Character		10th Character		11-15th Character	
Code	Packing Material	Code	Connection	Code	Handle	Code	Unused Character
1	PTFE	1	1/4"NPT	1	T Bar	A000	
2	Graphite	2	1/2"NPT				
Z	Other	Z	Other	9	Other		

Standard Features

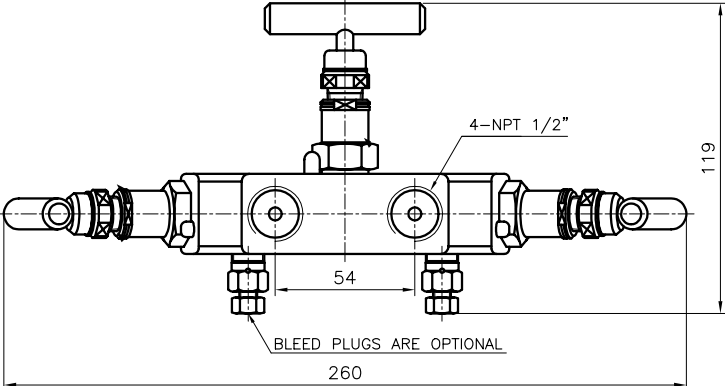
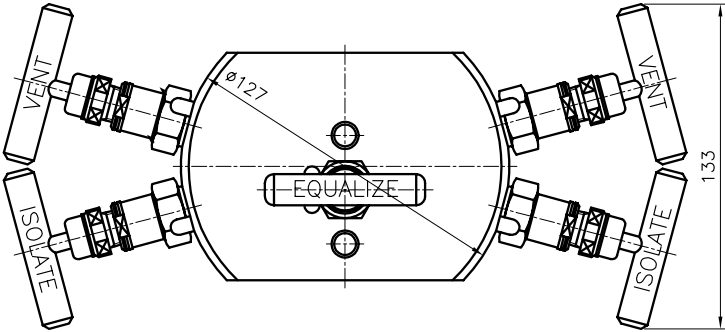
Max. working pressure : 41MPa
Max. working Temperature : 240 °C
Packing : PTFE and Graphite

A080 : TYPE OF MOUNTING

CODE T1/T2

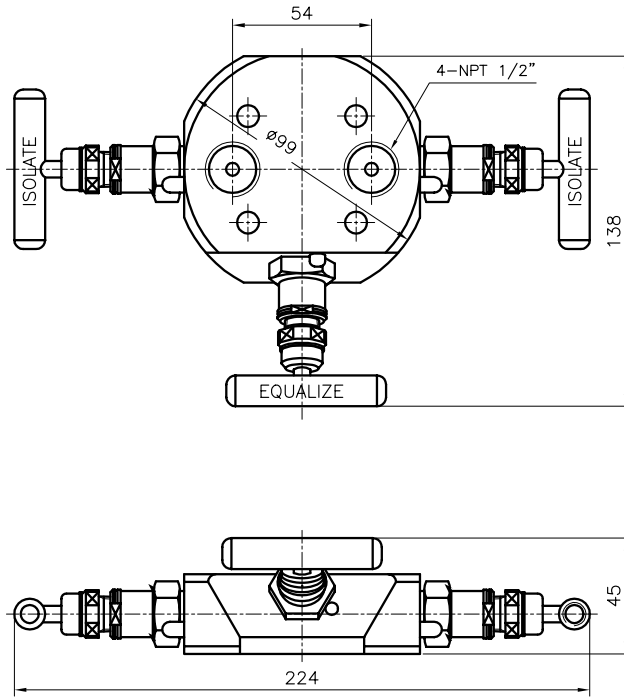


CODE F1/F2

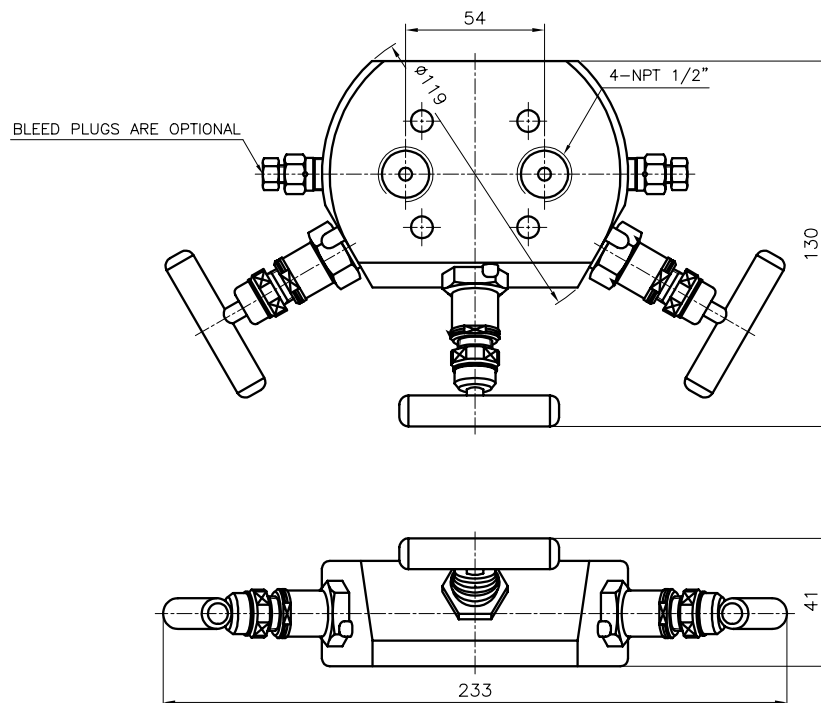


A080 : TYPE OF MOUNTING

CODE T3

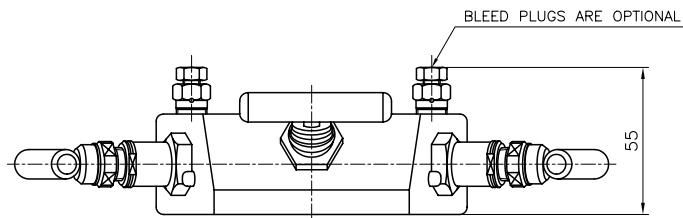
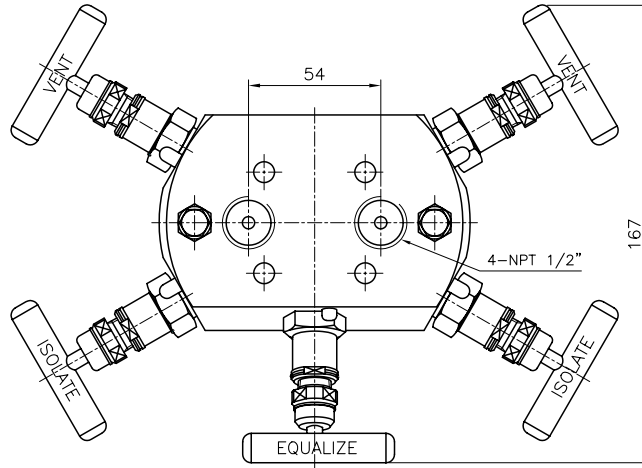


CODE T4

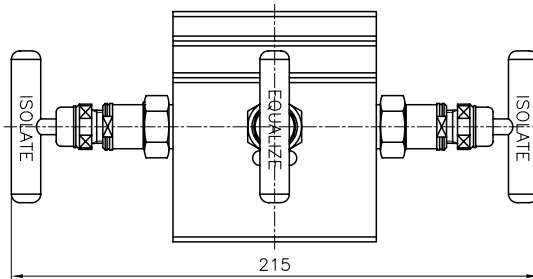
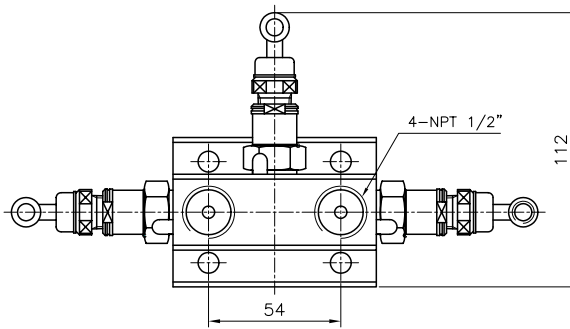


A080 : TYPE OF MOUNTING

CODE F3/F4

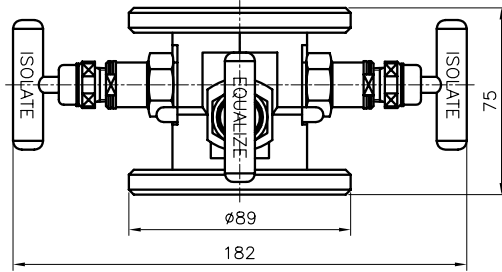
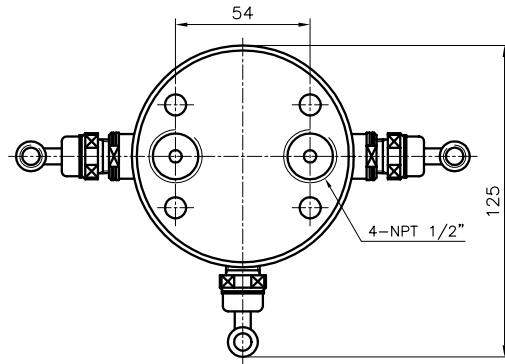


CODE T5



A080 : TYPE OF MOUNTING

CODE T6



CODE F6

